

# STROMAG SHD5A

## HYDRAULIC DISC BRAKES

### EMERGENCY STOPPING BRAKE FOR TOWER AND PORT CRANES.

Stromag completes the SHD range SIME Brakes by introducing the SHD5A caliper.

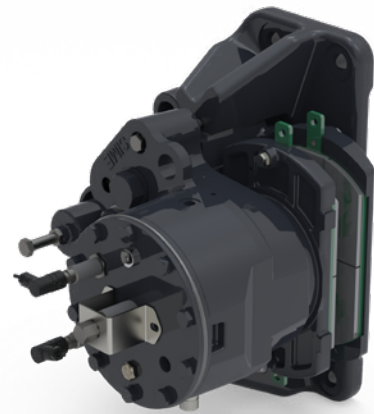
This fail-safe single-spring hydraulic caliper is a new answer to the technological challenge imposed by lifting equipment.

Robust construction and simplicity of operation bring to this caliper a high reliability. Its compact and light weight design allows an easy mounting and operation in a restricted space.

Hydraulic Power Pack and further options can be provided in accordance with the installation requirement.

#### Benefits include

- Hydraulic caliper
- Direct acting caliper / few components
- Designed for 200,000 cycles
- Compact and light weight design
- Braking force up to 56 kN
- Protection level C3-H
- Positive lining fastening: easy replacement
- Opening and wear monitoring switches preset in factory
- Option: Closing monitoring switch.



#### Applications

- Tower Cranes
- Port Cranes
- Offshore applications



Photo courtesy of COMANSA

# SHD5A CALIPER

## TECHNICAL DATA / DIMENSIONS

Revision number: T10131-02-E Revision date: 27.09.2018

- Fail-safe braking
- Braking by spring application
- Hydraulic release
- Opening proximity
- Holding tool
- Lining wear detectors
- Protection level C3-H standard ISO 12944-2
- Association with discs thickness 30 mm

### Working conditions:

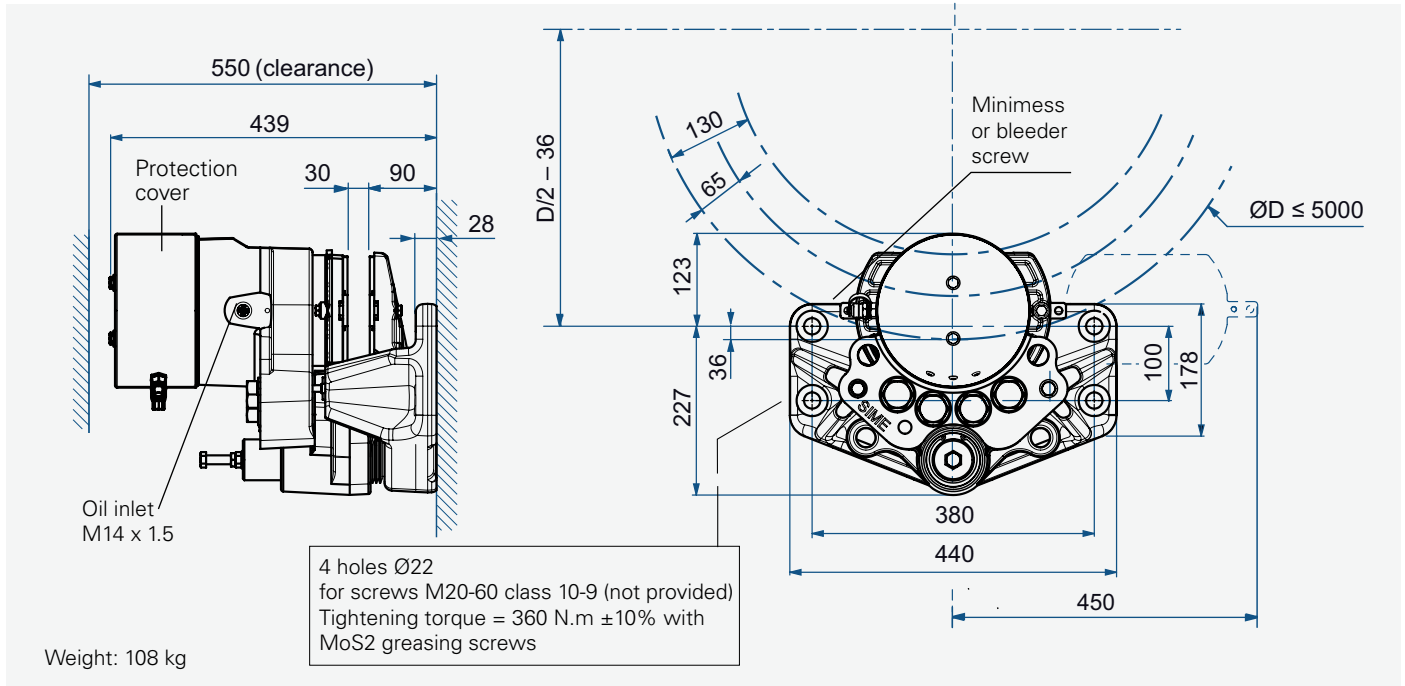
- Ambient temperature: -10°C to +60°C
- Relative humidity  $\leq 70\%$
- Dust in atmosphere  $\geq 65\mu\text{m}$
- Other conditions, consult Stromag.

### Use:

- Emergency stopping brake in case of overspeed or loss of electrical supply
- Service life: 200 000 cycles

### Options:

- Lining wear proximity switch
- Closing proximity switch
- Low temperature:
  - dynamic braking: -30°C to +60°C
  - brake closed (park position): -40°C to +60°C
- Protection level C5M-H



Designation	SHD5A-...-M2		1	2	3	4	5	6	7	8
	Lining		US2-1							
Braking force BF for air gap disc/lining of 2x1mm	Dynamic	N	15500	17700	20000	28000	33000	41000	48000	56000
	Static	N	13650	15600	17600	24650	29050	36100	42250	49300
Linear speed of the disc	m/s		$\leq 10$							
Dynamic braking torque BT (m.N) for 1 caliper and disc ØD (mm) / D max $\leq 2000\text{mm}$	N.m		BT = BF (D/2000 - 0,065)							
Regulation pressure	Minimum	bar	60	60	85	85	110	140	140	180
	Maximum	bar	80	80	115	115	140	160	160	200
Setting pressure limit valve of hydraulic unit	bar		105	105	140	140	165	190	190	225
Total volume of oil displaced			12.7 per stroke (for nominal disc/lining stroke of 1 mm per side)							
Max. oil volume of the jack	cm <sup>3</sup>		76							

Torque and effort values are subject to a variation of  $\pm 10\%$   
Response time at nominal torque  $\leq 0.3$

### Proximity switches

3 wires PNP NO  
10 to 58 VDC 200 mA  
with connector M12

# Stromag™

**Regal Rexnord**

[stromag.com.com](http://stromag.com.com)

[sales.LaGuerche@regalrexnord.com](mailto:sales.LaGuerche@regalrexnord.com)

**Stromag France SAS** - Avenue de l'Europe - 18150 La Guerche sur L'Aubois - France

[regalrexnord.com](http://regalrexnord.com)

The proper selection and application of products and components, including assuring that the product is safe for its intended use, are the responsibility of the customer. To view our Application Considerations, please visit <https://www.regalrexnord.com/Application-Considerations>.

To view our Standard Terms and Conditions of Sale, please visit <https://www.regalrexnord.com/Terms-and-Conditions-of-Sale>.

"Regal Rexnord" is not indicative of legal entity. Refer to product purchase documentation for the applicable legal entity.

Regal Rexnord and Stromag are trademarks of Regal Rexnord Corporation or one of its affiliated companies.

© 2021, 2024 Regal Rexnord Corporation, All Rights Reserved. MCF P-8312-SG-EN-A4 07/25

**RegalRexnord™**