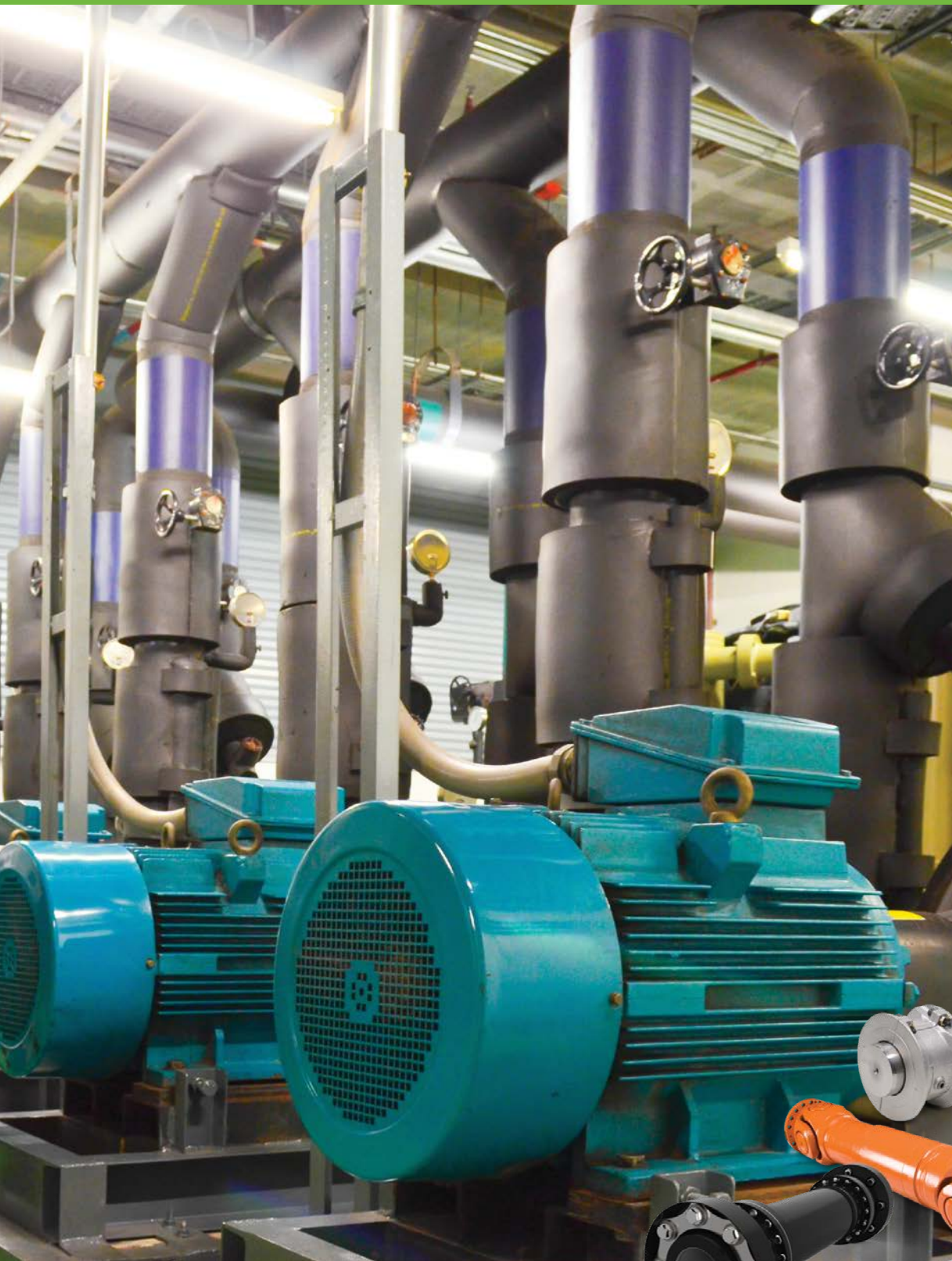


## Industrial Couplings






Regal Rexnord offers the largest selection of industrial couplings available from a single source...worldwide.

The industry-leading brands of Regal Rexnord, TB Wood's, Ameridrives, Bibby Turboflex, Guardian Couplings, Huco and Lamiflex Couplings, have been providing innovative coupling solutions to meet the requirements for a broad variety of applications spanning many industries. Highly engineered coupling products represent the latest in coupling technology, featuring superior design and exceptional quality to ensure long-lasting performance in all types of environments.

[www.RegalRexnord.com](http://www.RegalRexnord.com)

● Manufacturing/Modification Center with Technical Support  
■ Regional Distribution Center with Technical Support



Product Family	Primary Brand	Product Lines	TBW Chambersbu
Precision Couplings	Huco	Huco	■
Elastomer Shaft Couplings	TB Wood's	Sure-Flex Plus®, Dura-Flex®, L-Jaw	●
	Guardian	Guardian	
	Stromag	Periflex® TT/-NA	
Engine Flywheel Couplings & Housings	Guardian	Guard-Flex®, FBA, FL, Delta, FH, NV	
	Stromag	Periflex® VN, Vector®, GE, TRI-R, Periflex® CS, Periflex® PS	
General Industrial Disc Couplings	TB Wood's	Form-Flex®, Torsiflex-i	
	Bibby	Torsiflex®, Turboflex	
	Lamiflex	Powerflex	
General Industrial Gear Couplings	Ameridrives	Amerigear	
	Bibby	Bibby Series 3	
Grid Couplings	Bibby	Grid	
	TB Wood's	G-Flex	●
Universal Joints	Ameridrives	Americardan®	
High Performance Diaphragm Couplings	Ameridrives	Ameriflex®	
High Performance Disc Couplings	Bibby	Turboflex	



Manufacturing Locations										Global Service Offices					
North America				EMEA			South America	Asia/Pacific		North America		Asia/Pacific			
Regal Rexnord, PA	TBW-AMD San Marcos, TX	Ameridrives Erie, PA	Guardian Michigan City, IN	Bibby/ Twiflex Bedford UK	Huco Hertford UK	Stromag Unna DE	Lamiflex Cotia Brazil	Stromag Pune India	Regal Rexnord Shenzhen China	TBW Canada Mississauga, Montreal, Edmonton	TBW Mexico Mexico City	Regal Rexnord Hong Kong	Regal Rexnord Taiwan	Regal Rexnord Singapore	Regal Rexnord Australia
	■				●		■					■	■	■	■
					●		●			■	■	■	■	■	■
			●		●		■								
			●			●	■	■	■						
			●		■										
			●			●	■	■	■						
	●			●			●		●	■	■		■	■	■
	●			●			●		●						■
	■			■			●				■				
	●								●		■	■	■	■	■
					●				●						
					●										■
										■	■	■	■	■	
	●	●	●									■			
		●		●			■								
		●		●			■		●						

**Regal Rexnord offers the largest selection of industrial couplings available from a single source...worldwide.**

For over 150 years, TB Wood's, Ameridrives, Bibby Turboflex, Guardian, Huco and Lamiflex, industry-leading brands of Regal Rexnord have been providing innovative coupling solutions to meet the requirements for a broad variety of applications spanning many industries. Highly engineered coupling products represent the latest in coupling technology, featuring superior design and exceptional quality to ensure long-lasting performance in all types of environments.

## HIGH PERFORMANCE DISC + DIAPHRAGM COUPLINGS



**Ameriflex®**  
*by Ameridrives*

Over 678 kNm; 6,000,000 in.lbs.

Unique diaphragm design permits high-torque density and low weight. Designed for years of dependable, low maintenance performance.

- Multiple, separated, convoluted diaphragms allow greatest design flexibility for most demanding applications
- API-671 compliant
- Best for high axial travel requirements

### Typical Applications

- Gas and Steam Turbines
- Compressors
- Generators
- Pumps
- Marine/Offshore Platform
- Pipelines



**TurboFlex HP**  
*by Bibby*

Up to 600 kNm; 5,300,000 in.lbs.

These torsionally stiff, light weight couplings are capable of transmitting high torques at high speeds while accepting significant levels of angular, radial, and axial misalignment. They are easy to install, suitable for hostile environments, require no lubrication and feature a high torque to weight ratio. Specific designs are available which meet the customer's exact requirements.

Standard units are compliant with API 671 (American Petroleum Institute) and ATEX 2014/34/EU.

- No maintenance
- Standard and reduced moment designs available
- Capable of being torsionally tuned to suit specific machinery requirements

### Typical Applications

- Gas and Steam Turbines
- Compressors
- Generators
- Pumps
- Marine/Offshore Platforms
- Pipelines
- Test equipment



## GEAR SPINDLES



### SM, SF, SL Series by Ameridrives

Up to 7,350 kNm; 65,000,000 in.lbs.

Designed for medium to high torque mill applications which require rugged strength. Units can operate at high misalignment angles.

- Flanged, leveler and mill types
- Fully crowned hub gear teeth
- One-piece, molded lip-type seals
- High degree of strength
- Advanced gear design increasing torque capacity for a given diameter

#### Typical Applications

- Steel Mill Main Drives for Cold and Hot Strip Mills
- Bar and Rod Mills
- Auxiliary Mill Drives
- Levelers

## GRID + GEAR COUPLINGS



### G-Flex by Bibby

Up to 169 kNm; 1,500,000 in.lbs.

State-of-the-art design from Bibby Turboflex, the original grid coupling manufacturer. G-Flex/Bibby 2000 Series is an all-metal coupling that provides positive protection against the damaging effects of shock loads and vibration. Aluminum horizontal cover (T10), and all-steel vertical cover (T20) designs are available. G-Flex tapered grid couplings are an excellent choice where torsional flexibility/vibration damping are primary concerns.

- Easy to assemble/replace
- Part-for-part interchangeable with industry standard tapered grid coupling designs
- Coupling sizes 1020 through 1140 in-stock in a range of standard bore sizes
- Shot-peened tapered grid flex element for long life

#### Typical Applications

- Pumps
- Gear Boxes
- Electric Motors
- Fans/Blowers
- Conveyors
- Compressors



### Amerigear by Ameridrives

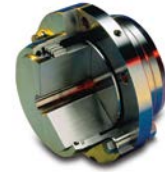
Up to 6,680 kNm; 60,000,000 in.lbs.

Fully-crowned gear teeth provide operational benefits including maximum load-carrying capacity with minimum size, maximum reliability and long life.

- Both "O" ring and metal seal models are available
- Strong, rigid floating sleeve
- Precision-machined identical hubs
- Positive dust-tight seals

#### Typical Applications

- Cranes and Hoists
- Elevators
- Offshore
- Draglines and Shovels
- Textile Machinery
- Fans/Blowers
- Air Compressors
- Ore Crushers
- Centrifugal Pumps



### Series II by Bibby

Up to 147 kNm; 1,300,000 in.lbs.

Fully-crowned gear teeth provide maximum contact at the strongest part of the tooth.

- Models available for use on vertical and/or horizontal shafts
- Bore capacity up to 510 mm
- High torque to weight ratio
- Half per half interchangeability

#### Typical Applications

- Steam Turbines
- Printing Presses
- High Torque Motors

## GENERAL PURPOSE DISC COUPLINGS



### Form-Flex® by TB Wood's

Up to 270 kNm; 2,400,000 in.lbs.

Form-Flex metal disc couplings consist of two hubs, a spacer and two high strength carbon or stainless steel flexible discs. Modified and special designs are commonly supplied to meet specific application conditions. Available in carbon steel, stainless steel or with corrosion resistant coatings.

- No maintenance
- Zero backlash
- Close couple, spacer and floating shaft designs available
- Easy interchangeability

#### Typical Applications

- Pumps and Compressors
- Engine Driven Equipment
- Printing Presses
- Machine Tools
- Positioning Systems
- Food Processing Equipment
- Cooling Tower Fans
- Blowers and Ventilating Fans
- Test Equipment



### Floating Shafts by TB Wood's

Up to 270 kNm; 2,400,000 in.lbs.

Floating shaft couplings are specifically designed for long span applications from 24" to over 300". Tru-Tube composite tubes (shown) can be specified for spans up to 220" (6 meters). Composite tubes weigh up to 80% less than steel and can eliminate the cost of bearing supports and other structures.

- Horizontal or vertical applications
- Custom designed to specification
- Steel, stainless steel or composite tube construction

#### Typical Applications

- Cooling Tower Fans
- Vertical Pumping Systems
- Mine Ventilation Fans
- Fans/Blowers
- Test Equipment



### Turboflex GC® by Ameridrives

Up to 180 kNm; 1,600,000 in.lbs.

GC Series couplings feature unitized, straight-sided flexible discs for ease of installation. Up-to-date design targeted specifically for heavy industrial applications. These couplings provide increased torque capacity per size by taking advantage of the latest materials and design technologies.

- Unitized Flex Packs
- Easier, faster installation
- Interchangeable with industry standard designs
- Fewer sizes to cover a full range of applications
- Reduced spare parts inventory
- Lower total cost of ownership
- Special designs available for higher-torque applications

#### Typical Applications

- Compressors
- Engine Driven Equipment
- Ventilating Fans
- Pumps



### Torsiflex® by Bibby

Up to 60 kNm; 530,000 in.lbs.

Torsiflex couplings are specifically designed for the process pump and general industrial markets. Torsiflex is an all-metal disc coupling requiring no lubrication which incorporates a plug-in feature to allow installation and removal without disturbing the pump alignment.

Standard units are compliant with API-610 (American Petroleum Institute) and the more demanding API-671 standard can be achieved.

In addition, the coupling is certified to meet ATEX 2014/34/EU.

- No maintenance
- Zero backlash
- Custom designs including close coupled, long spacer arrangements available
- Easy interchangeability
- Standard sizes available from stock

#### Typical Applications

- Pumps
- Compressors
- Engine Driven Equipment
- Machine Tools
- Food Processing Equipment
- Blowers
- Ventilating Fans
- Test Equipment

## TORQUE LIMITERS



### **Powerflex®** *by Lamiflex*

Up to 230 kNm; 2,000,000 in.lbs.

Powerflex disc couplings are a reliable solution for a mechanical power transmission between drives (Turbines, Electrical Motors, Engines, etc.) and rotating driven machines. Modified and optimized disc profile provides a superior stress distribution.

The condition of the flexible units can be checked while the machine is running, also suitable for harsh environments while accepting high misalignments levels.

- No need for lubrication and maintenance
- Zero backlash, no wearing parts
- Visual inspection
- High level inherent balance

#### **Typical Applications**

- Pumps
- Compressors
- Steam Turbines / Electric Motors
- Paper Machines
- Fans / Blowers
- Pipelines / Offshore Platforms



### **Bibbigard** *by Bibby*

Up to 169 kNm; 38,000 lbf.\*

Bibbigard safety element torque limiters incorporate a number of safety element modules of a specific size mounted between two flanges and preset to release at a specified torque value in order to protect the drive system from expensive damage and lost production. They can be used with various types of drive medium many of which are available from Regal Rexnord. Bibbigard has been successfully utilized in many different industries where, subject to space availability, the release torque capacity is virtually unlimited.

- Accurate release torque repeatability
- Simple fast manual re-engagement
- Low-cost maintenance
- Versatile mounting capability

#### **Typical Applications**

- Steel Mill Equipment
- Conveyor Drives
- Twin Screw Extruders
- Wood Grinding Machinery
- Ball Mill Drives
- Water Treatment Equipment
- Tunnel Boring Machines

## UNIVERSAL JOINTS



### **Americardan®** *by Ameridrives*

Up to 4,800 kNm; 42,450,000 in.lbs.

Designed for operation at high misalignment angles up to 15°. Bearing and seal design resists lubrication loss and contamination. Ideal for use in severe atmospheric conditions. Light and heavy-duty models available.

- One-piece, yoke and bearing housing construction
- High degree of strength with minimum distortion under load
- Round bearing and wing style designs available

#### **Typical Applications**

- Cement Mixers/Crushers
- Rubber Mixers
- Metal Shredders
- Mining Conveyors/Pumps/Off Highway Equipment
- Paper Calendars/Couch/Dryer/Mixer/Winder Rolls
- Irrigation Systems
- Primary Steel Rolling Mills

## ELASTOMERIC COUPLINGS



**L-Jaw**  
by TB Wood's

Up to 0.70 kNm; 6,228 in.lbs.

The Jaw-type elastomeric coupling is an economical, proven solution for general purpose applications. Jaw couplings are easy to install and require no lubrication or maintenance. Four different flexible insert types are available: Buna-N rubber, Urethane, Hytrel™ and Bronze. Jaw couplings are an excellent choice for all light and medium duty general purpose industrial applications.

- No maintenance/lubrication
- Part-for-part interchangeable with industry standard design
- Fail-safe design – equipment will continue to drive if elastomer fails
- Wide range of in-stock inch and metric bore sizes

#### Typical Applications

- Pumps
- Fans/Blowers
- Electric Motors
- Compressors



**Sure-Flex Plus®**  
by TB Wood's

Up to 8.20 kNm; 72,480 in.lbs.

Sure-Flex Plus is a TB Wood's original! Sure-Flex Plus Couplings utilize a rubber (EPDM or Neoprene) or Hytrel™ thermoplastic flex element (sleeve) to transmit torque and accommodate shaft misalignments. Sure-Flex Plus couplings have exceptional torsional flexibility, and the 4-way flexing action absorbs virtually all types of shock, vibration, misalignment, and end float. Sure-Flex Plus couplings are an excellent choice when low cost, high flexibility, vibration damping, and easy installation are primary concerns.

- Easy assembly
- Spacer, bushed hub, and clamping hub designs in stock
- Flexible design accommodates misalignment and protects equipment

#### Typical Applications

- Pumps
- Fans/Blowers
- Compressors
- Electric Motors
- Mixers
- Conveyors



**Dura-Flex®**  
by TB Wood's

Up to 4.50 kNm; 39,500 in.lbs.

Dura-flex couplings "split-in-half" element design allows for easy element installation/ replacement without moving connected equipment or disturbing the shaft connection. Spacer design can accommodate a large range of shaft spacing with few parts. Patented design minimizes bond stress for long coupling life. Highly flexible and able to accommodate shaft misalignment while minimizing vibration and preventing damage to connected equipment.

- Easy to assemble/replace
- High misalignment ratings
- No maintenance/lubrication
- Part-for-part interchangeable with industry standard design
- In-stock versatile spacer design can accommodate many configurations with few parts

#### Typical Applications

- Pumps
- Fans/Blowers
- Compressors
- Electric Motors
- Conveyors



**E-Flex**  
by Bibby

Up to 96 kNm; 850,000 in.lbs.

These pin and bush couplings accept parallel, angular and axial misalignment and can provide considerable torsional flexibility.

- Vertical or horizontal operation
- 80 or 90 shore hardness close fitting flexible elements
- Steel or cast iron hubs
- Brake drum or disc available as well as special designs

#### Typical Applications

- Pumps
- Fan Drives
- Various Steelworks Drives
- Twin Screw Extruder Drives
- Packaging Machinery



## PRECISION COUPLINGS



### Flex B, Flex K, Flex M by Huco

Up to 500 Nm; 4,425 in.lbs.

#### Flex B Bellows

Precision Bellows coupling with excellent kinematic properties. Two types offer differing combinations of stiffness, misalignment and axial motion.

#### Flex K Large Bellows

Large Precision Bellows coupling with excellent kinematic properties. Two types offer differing combinations of stiffness, misalignment and axial motion.

#### Flex M Disc

Precision Disc coupling with excellent kinematic properties. Dynamically balanced construction. Single-stage versions make up into 'whirl' free Cardans. Two-stage versions offer short envelopes and low bearing loads.

#### Typical Applications

- High-End Servo Drives
- Pulse Generators
- Scanners
- Positioning Slides
- High Speed Dynamometers
- Unsupported Drive Shafts
- Metering Valves



### Multi, Single, Step Beam by Huco

Up to 140 Nm; 1,239 in.lbs.

#### Multi Beam

Zero backlash single-piece couplings. Single stage (3-beam); two stage (6-beam). Material options available for moisture and corrosion resistance.

#### Single Beam

Zero backlash single-piece couplings. More flexible than Multi-Beam but less torsionally rigid.

#### Step Beam

Unique plastic coupling design provides an excellent combination of radial flexibility with torsional stiffness.

#### Typical Applications

- Stepper and Servo Drives
- Encoders
- General Purpose
- Tachometers
- Small Pumps
- Motors and Drives
- Light-Duty Power Transmission Applications



### Oldham, Uni-Lat, Flex P by Huco

Up to 44 Nm; 389 in.lbs.

#### Oldham

Zero/low backlash couplings, robust design. Easy to use 3-part couplings with replaceable wear elements. Pull-apart re-engage facility for blind assemblies.

#### Uni-Lat

Unique, light-duty couplings with generous angular and radial misalignment compensation. Resists axial motion, can anchor unrestricted shafts and perform light push/pull duties.

#### Flex P

Exceptional flexibility in all three directions: radial, angular and axial.

#### Typical Applications

- Stepper drives
- Encoders
- Resolvers
- Tachometers
- Potentiometer Drives
- Small Positioning Slides
- Dosing Pumps
- Light power drives
- Small Generators



### Vari-Tork by Huco

Up to 3 Nm; 27 in.lbs.

Small, user-adjustable torque limiters for concentric or in-line mounting. Operates by friction using interleaved clutch plates.

Friction clutches interrupt rotation when the load being transmitted reaches a pre-determined threshold. Clutches help protect personnel and equipment.

#### Typical Applications

- All types of small drives

## COUPLING GUARDS



### **Coupguard®** *by Lamiflex*

#### **Several Sizes available**

The Coupguard® is an effective and safe solution to protect people from moving hazards, also protect equipment and components from external and environmental damage. Coupguard® is easy to assemble and they also can be opened or removed to inspect the coupling or other connection parts after proper lock out procedures have been followed. Coupguard are sized to overall applications and can accommodate a wide range of equipment and shaft coupling types.

- Low Initial Cost
- Hinged door open quickly for inspection
- Safety Compliance and Orange in color
- Ambient Temperatures up to 155°C
- Axial and Radial air flow
- Length and height adjustment
- Custom design available
- Petrobras Patented Product
- API / ANSI / ABNT standards

#### **Typical Applications**

- Pumps
- Compressors
- Fans
- Steam turbines
- Conveyors
- Paper Machines

## BEARING ISOLATORS



### **Ecoblock®, Ecobearing®** *by Lamiflex*

#### **Sizes up to 200mm / 4.5 inches**

Innovation, technology, and bearing life are the main reason to use bearing isolators. Bearing isolators are a non-contact, non-wearing, permanent bearing protection devices. They prevent humidity and external contamination, retains lubrication and provides static and dynamic sealing for all kinds of bearing box used in the industry.

#### **– Ecoblock**

It is an economical solution for general purpose applications retrofitting lip seals and other bearings contacting sealing.

#### **– Ecobearing – (Petrobras Patent)**

Are specially designed to meet the API specifications.

- Zero oil or grease leakage
- Environment protection
- Increasing bearing life and MTBF
- Static and dynamic sealing
- Non-contact, Non-wearing
- Standard sizes available from stock

#### **Typical Applications**

- Electric Motors
- Pumps
- Gearboxes
- Pillow block
- Steam turbines
- Fans
- Oil mist

# Regal Rexnord

## OFFERS THE LARGEST SELECTION OF INDUSTRIAL COUPLINGS AVAILABLE FROM A SINGLE SOURCE...WORLDWIDE

The industry-leading brands of Regal Rexnord, **TB Wood's**, **Huco**, **Bibby Turboflex**, **Ameridrives**, **Guardian Couplings** and **Lamiflex Couplings**, have been providing innovative coupling solutions to meet the requirements for a broad variety of applications spanning many industries. Highly engineered Regal Rexnord coupling products represent the latest in coupling technology, featuring superior design and exceptional quality to ensure long-lasting performance in all types of environments.

**WWW.REGALREXNORD.COM**



### ELASTOMERIC COUPLINGS

TB Wood's  
Bibby Turboflex  
Guardian Couplings



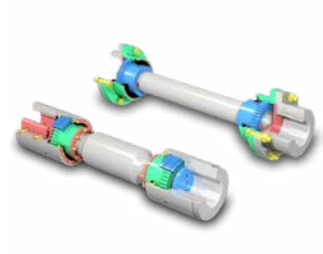
### GRID & GEAR COUPLINGS

Bibby Turboflex  
Ameridrives



### COUPLING GUARDS & BEARING ISOLATORS

Lamiflex Couplings



### GEAR SPINDLES

Ameridrives



### UNIVERSAL JOINTS

Ameridrives



### TORQUE LIMITERS

Bibby Turboflex



### PRECISION COUPLINGS

Huco  
Guardian Couplings



### FLYWHEEL COUPLINGS, ENGINE HOUSINGS & PUMP MOUNTS

Guardian Couplings  
TB Wood's



### HIGH PERFORMANCE DISC & DIAPHRAGM COUPLINGS

Ameridrives  
Bibby Turboflex  
Lamiflex Couplings



### GENERAL PURPOSE DISC COUPLINGS

TB Wood's  
Ameridrives  
Bibby Turboflex  
Lamiflex Couplings

## NORTH AMERICA

### Ameridrives

Mill Spindles, Ameriflex,  
Turboflex

Erie, PA - USA  
1-814-480-5000

### Ameridrives

Gear Couplings, Amerigear  
San Marcos, TX - USA  
1-800-458-0887

### Ameridrives

Universal Joints, Drive  
Shafts, Mill Gear Couplings,  
Americardan

Erie, PA - USA  
1-920-593-2444

### Guardian Couplings

Engineered Flywheel  
Couplings, Engine Housings  
and Pump Mounts, Flexible  
Shaft Couplings

Michigan City, IN - USA  
1-219-874-5248

### Huco

Precision Couplings and  
Air Motors, Sure-Flex Plus,  
Dura-Flex, L-Jaw, Guardian,  
Bibby Series 3, Grid

Chambersburg, PA - USA  
1-888-829-6637

### TB Wood's

Elastomeric Couplings,  
Huco, Sure-Flex Plus,  
Dura-Flex, L-Jaw, G-Flex

Chambersburg, PA - USA  
1-888-829-6637 – Press #5

For application assistance:  
1-888-829-6637 – Press #7

### TB Wood's

General Purpose Disc  
Couplings, Form-Flex,  
Torsiflex-i, Torsiflex,  
Turboflex, Lamidisc,

San Marcos, TX - USA  
1-888-449-9439

### TB Wood's

Sure-Flex Plus, Dura-Flex,  
L-Jaw, Form-Flex,  
Torsiflex-i, Amerigear,  
G-Flex

Mexico City, Mexico  
1-800-700-6500

### TB Wood's

Sure-Flex Plus, Dura-  
Flex, L-Jaw, Form-Flex,  
Torsiflex-i, G-Flex

Mississauga, ON - Canada  
1-905-696-2546

### TB Wood's

Sure-Flex Plus, Dura-  
Flex®, L-Jaw, Form-Flex,  
Torsiflex-i, G-Flex

Edmonton, AB - Canada  
1-780-439-7979

### TB Wood's

Sure-Flex Plus, Dura-  
Flex, L-Jaw, Form-Flex,  
Torsiflex-i, G-Flex

Montreal, QC - Canada  
1-514-332-4812

## ASIA PACIFIC

### China - Hong Kong

Huco, Sure-Flex Plus,  
Dura-Flex, L-Jaw,  
Amerigear, Grid,  
Americardan, Ameriflex

Hong Kong - China  
852 2615 9313

### China - Shenzhen

Form-Flex, Torsiflex,  
Turboflex, Amerigear, Grid,  
Turboflex

Asia Pacific HQ  
+86 21 5169 9255

### Singapore

Huco, Sure-Flex Plus, Dura-  
Flex, L-Jaw, Form-Flex,  
Amerigear, Grid

Singapore  
+65 6487 4464

### Taiwan

Huco, Sure-Flex Plus, Dura-  
Flex, L-Jaw, Form-Flex,  
Amerigear, Grid

Taiwan  
+886 2 2577 8156

### Australia

Huco, Sure-Flex Plus, Dura-  
Flex, L-Jaw, Form-Flex,  
Torsiflex-i, Torsiflex, Turboflex,  
Amerigear, Grid, Ameriflex

Sydney - Australia  
+61 (0) 2 9622 1333

## EUROPE

### Bibby Turboflex

Disc, Gear, Grid Couplings,  
Overload Clutches, Form-  
Flex, Torsiflex-i, Torsiflex,  
Turboflex, Lamidisc,  
Ameriflex, Turboflex

Liversedge, England  
+44 (0) 1924 460801

### Huco

Precision Couplings and  
Air Motors, Sure-Flex Plus,  
Dura-Flex, L-Jaw, Guardian,  
Bibby Series 3, Grid

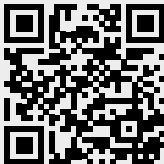
Hertford, England  
+44 (0) 1992 501900

### Lamiflex Couplings

Flexible Couplings, Bearing  
Isolators, and Coupling  
Guards, Huco, Sure-Flex  
Plus, Dura-Flex, L-Jaw,  
Lamidisc, Turboflex

Cotia, SP - Brasil  
+55 (11) 4615-6300

## SOUTH AMERICA



Scan to see all  
the brands of  
Regal Rexnord